

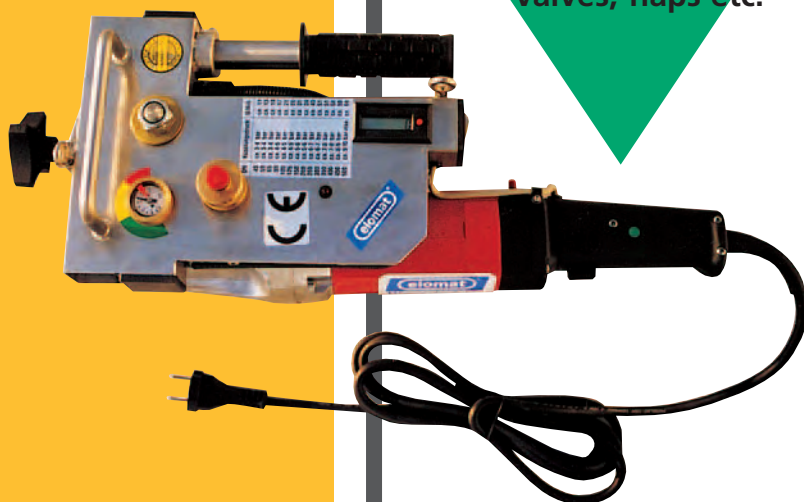
HANDYMAT



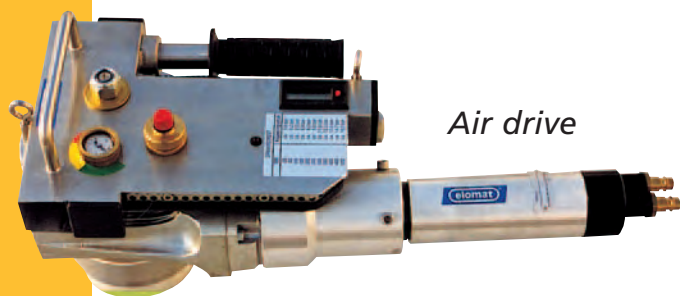
You can use any kind of hand wheel with this special slide gate valve device

For simple, effortless and safe operation of hand wheel fittings, slide gate valves, flaps etc.

- • • ♦ Can be operated by just one person
- • • ♦ Does not damage the operator's health
- • • ♦ Compact shape
- • • ♦ Flat design
- • • ♦ Practical handling
- • • ♦ Rapid assembly
- • • ♦ Hydraulic slip clutch
- • • ♦ Torque can be adjusted to 0-450 Nm in continuously variable manner
- • • ♦ Pushbutton for clockwise/anti-clockwise rotation
- • • ♦ Adding/subtracting revolution counter
- • • ♦ Continuous speed (approx. 20 rpm)



with Handyfix spoke adapter



Air drive

4 models:

Type: HY 01, 230 VAC

Type: HY 02, 110 VAC

Type: HY 03, 48 VDC

Type: HY 04, air

The device is very good at regenerating leaking closing slide gate valves. Expense replacements are a thing of the past.

... something is happening

Application examples using the Handymat XYZ torque supports which can be safely used for many variants



Single-arm support in corner on a five-spoke hand wheel

Accessories required:

- 1 Handyfix five-spoke adapter #Fix 5
- 1 set of XYZ torque supports #HYXYZ01



Vertical single-arm support on three-spoke hand wheel

Accessories required:

- 1 Handyfix three-spoke adapter #Fix 3
- 1 set of XYZ torque supports #HYXYZ 01



U-shaped support on ground with standard 30/30 square adapter

Accessories required:

- 1 30/30 standard square adapter # HY 2,6
- 1 set of XYZ torque supports #HYXYZ 01



Inclined single-arm support on four-spoke hand wheel

Accessories required:

- 1 Handyfix four-spoke adapter #Fix 4
- 1 set of XYZ torque supports #HYXYZ 01

... something is on the move

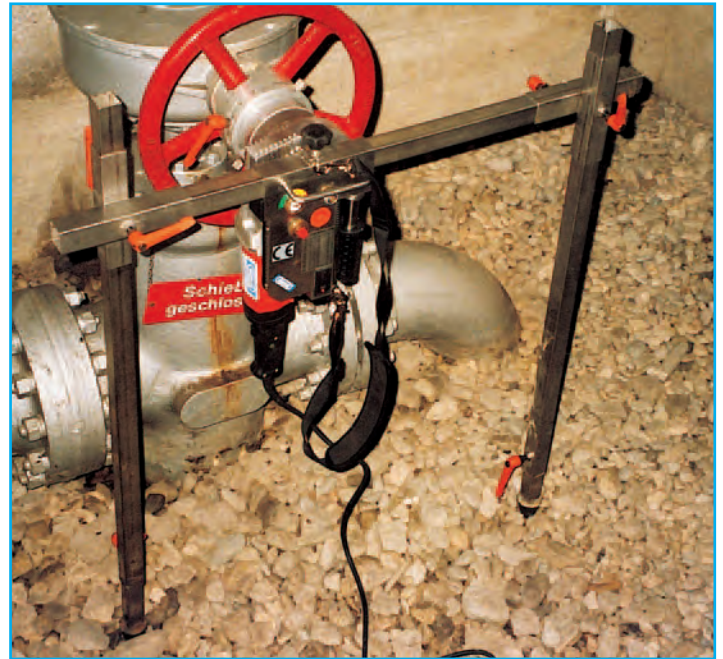
Application examples of how the Handymat can be put to practical use. The complete set of torque supports with can be used anywhere.



Activation of light-duty buried slide gate valve with hand support

Accessories required :

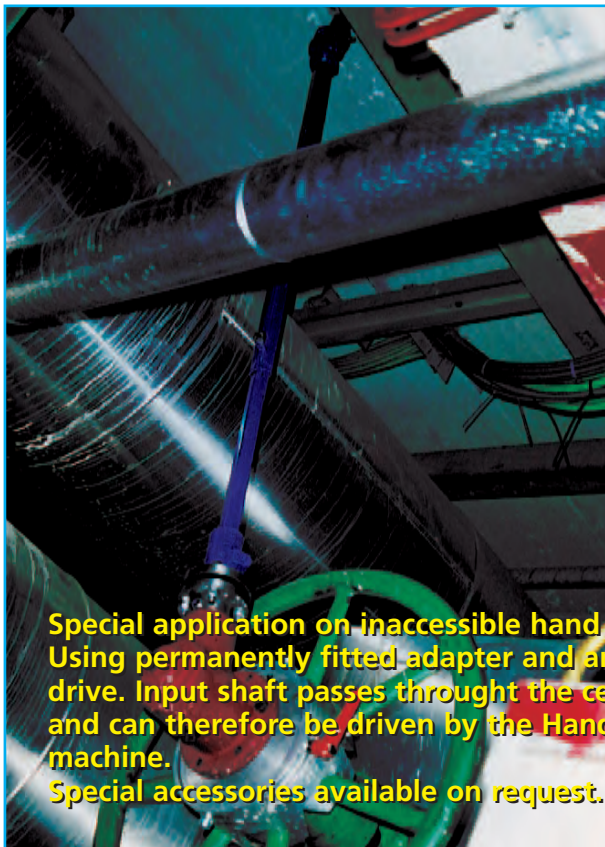
- 1 rigid 70 - 120 cm telescopic shaft with 30/30 adapter# HY 2.0
- 1 set of X Y Z torque supports # HYXYZ 01



Heavy-duty slide gate valve activation in gas feedback control station

Accessories required :

- 1 Handyfix six-spoke adapter #Fix 6
- 1 set of XYZ torque supports #HYXYZ 01



Special application on inaccessible hand wheel. Using permanently fitted adapter and angle drive. Input shaft passes through the ceiling and can therefore be driven by the Handymat machine. Special accessories available on request.



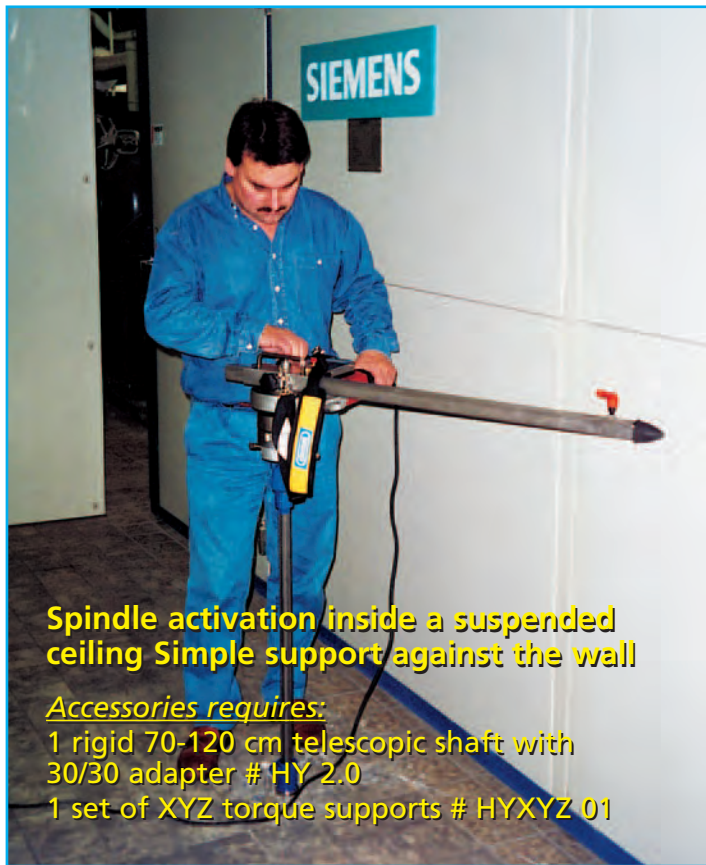
Heavy-duty parallel slide gate valve activation in sewage treatment plant.

Accessories requires:

- 1 Handyfix five-spoke adapter #Fix 5
- 1-set of XYZ torque supports #HYXYZ 01

... something is turning

Other application examples for the Handymat



Spindle activation inside a suspended ceiling Simple support against the wall

Accessories requires:

- 1 rigid 70-120 cm telescopic shaft with 30/30 adapter # HY 2.0
- 1 set of XYZ torque supports # HXYXZ 01



Even better: torque support without using your body. Can also be easily used with heavy-duty hydrant pillar in conjunction with XYZ torque supports.

Accessories required:

- 1 hydrant pillar adapter for hole pattern # HYZ 20
or hex # HYZ 21
- 1 set of XYZ torque supports # HXYXZ 01
- 1 B connection articulated adapter # HYZ 35

One-man support for light-duty hydrant pillars

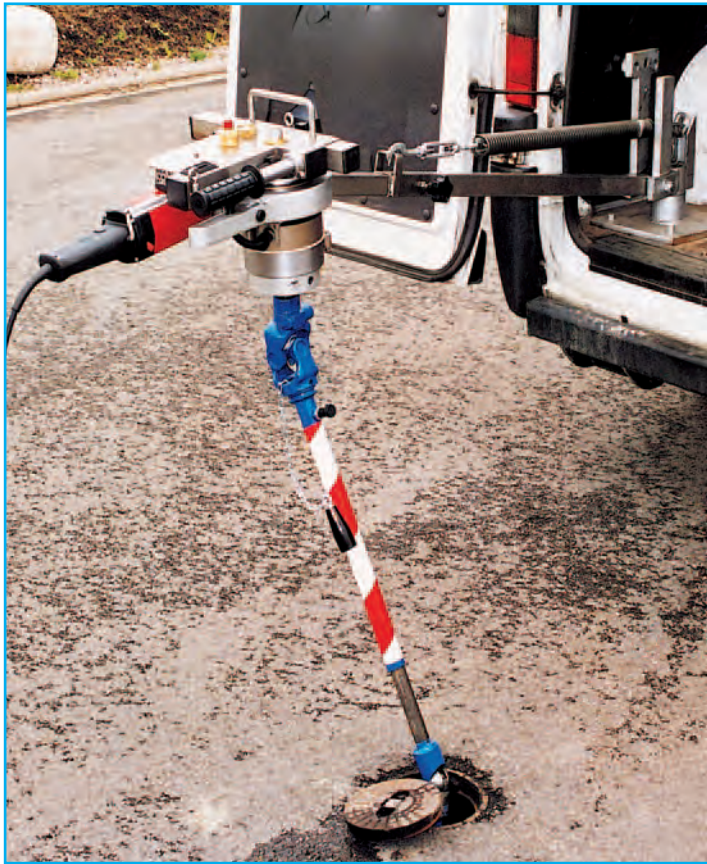
Accessories required:

- 1 hydrant pillar adapter for hole pattern # HYZ 20
or hex # HYZ 21
- 1 set of XYZ torque supports # HXYXZ 01



... something in operation

Application examples for activating buried slide gate valves from the municipal service vehicle



Heavy-duty buried slide gate valves can be activated from the vehicle using the telescopic arm

Accessories required:

- 1 stainless steel telescopic arm #Eu 1.3
- 1 angled pipe #HYZ35
- 1 telescopic shaft with 100 - 160 cm 2 cardan joints #EL 018
- 1 splined shaft journal # HYZ 10



Telescopic arm saves space when stored in the vehicle

Telescopic arm # EU1.3



Schmidt Watertechniek B.V.

Stoofweg 18-20

NL-3253 MA Ouddorp

tel.: +31 - (0)187 - 6052 00

fax: +31 - (0)187 - 60 51 71

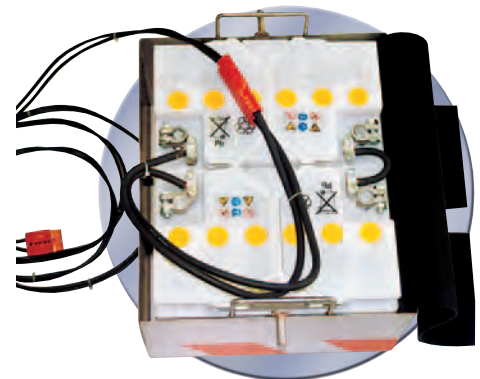
www.schmidt.nl

info@schmidt.nl

HANDYMAT ACCESSORIES



Water separator and oiler with 10 m 1/2" hose for air Handymat #HYZ 70



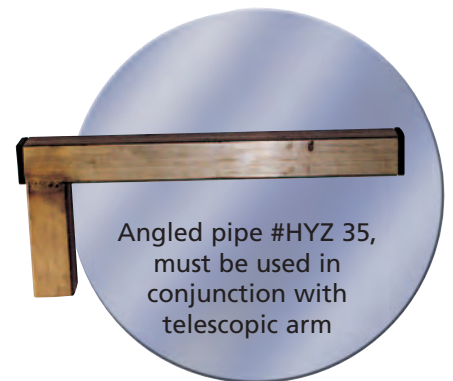
48 V battery set with stainless steel box and 10 m wiring set #HYZ 80 (for 48V Handymat).



Robust industrial drum with FI protection switch, 25 m rubber cable #HYZ 90, dto. 40 m #HYZ 91



Telescopic arm made of stainless steel with base plate, length as requested #EU 1.3, used in conjunction with angled pipe



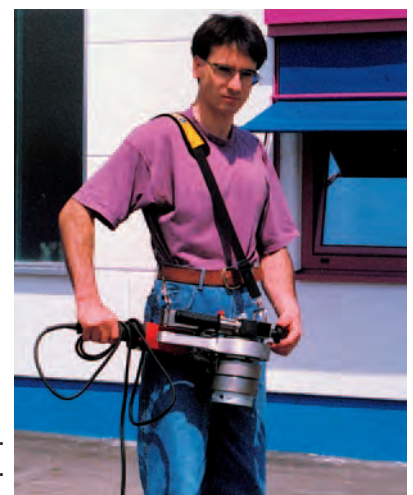
Angled pipe #HYZ 35, must be used in conjunction with telescopic arm



Carrier box #Hytp 01 for Handymat and for 1 square adapter (66 cm long, 28 cm wide, 32 cm high)

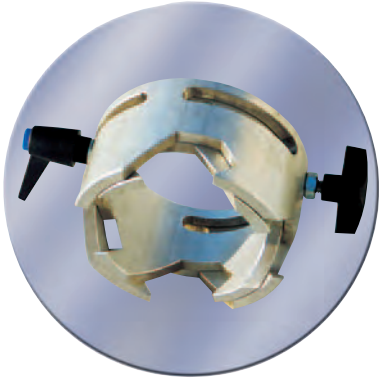


Robust carrier bag #HYTT 01, space for 1 set of XYZ torque supports and for various Handyfix adapters



Carrier belt in scope of supply. Can hold Handymat.

HANDYMAT ACCESSORIES



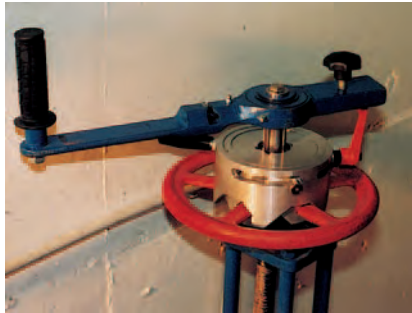
- 3-spoke Handyfix adapter # Fix 3
- 4-spoke Handyfix adapter # Fix 4
- 5-spoke Handyfix adapter # Fix 5
- 6-spoke Handyfix adapter # Fix 6
- 7-spoke Handyfix adapter # Fix 7



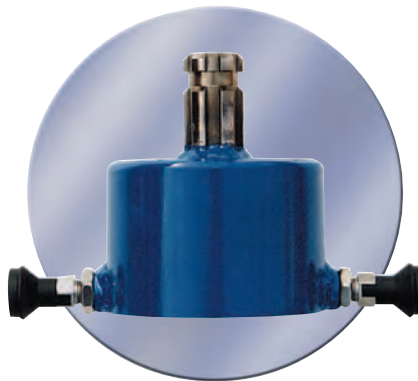
30/30 standard square adapter #HY 2.6



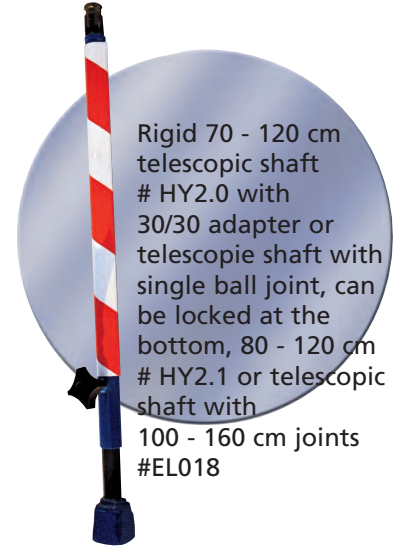
Splined shaft journal
#HYZ 10, dual sided 60 mm



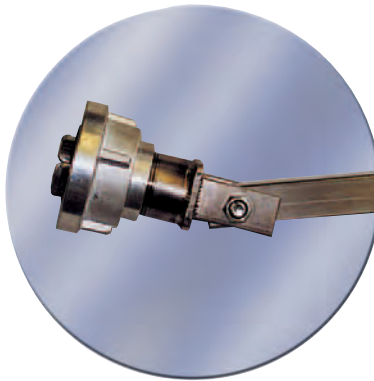
Handyfix compatible with RA 1.0 manual ratchet produced by Elomat.



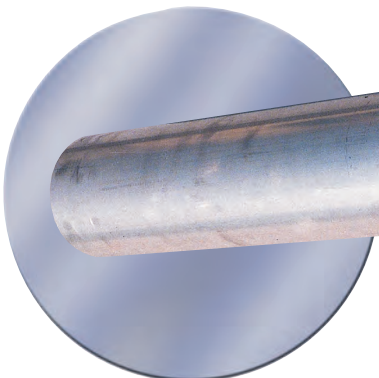
Hydrant pillar adapter # HYZ 21
for hydrant pillar with hex on cap head



Rigid 70 - 120 cm telescopic shaft # HY2.0 with 30/30 adapter or telescopic shaft with single ball joint, can be locked at the bottom, 80 - 120 cm # HY2.1 or telescopic shaft with 100 - 160 cm joints #EL018



B connection articulated adapter for hydrant pillar activation #HYZ 22 (used in conjunction with XYZ support system)



Standard spacer pipe #Fix 22, 50 cm for slide gate valves of up to DN 500 with continuous spindles (other lengths available)



XYZ support elements, complete set of 100 - 1900 cm telescopes, made of stainless steel # HYXYZ01 including three-point chain tensioning device.