

FLUKE®

Thermal Imaging MADE EASY.



SCHMIDT WATERTECHNIEK B.V.

TOOLS • MATERIALS • SERVICES

Stoofweg 18-20
NL-3248 MA Ouddorp
T: +31-(0)187-605200 info@schmidt.nl
F: +31-(0)187-605171 www.schmidt.nl

New from Fluke: The easiest-to-use thermal imagers have arrived.

REVOLUTIONIZING THERMOGRAPHY

At Fluke, our mission is to revolutionize the day-to-day jobs of our customers, and we've built our reputation on creating breakthrough, on-the-job innovations. Fluke delivers what matters most: **tools that make it easier for you to do your job.**



Ti125
Industrial/Commercial



Ti110
Industrial/Commercial



TiR125
Building Diagnostics



TiR110
Building Diagnostics



Ti100
General Use

BE MORE PRODUCTIVE

Technology isn't working for you if it's slowing you down. Fluke proudly introduces five new thermal imagers specifically designed to help you do more in less time, while being at home in the harshest of environments. A project that might normally take an hour can now be done in minutes. Our newest imagers are the lightest, most rugged, easiest-to-use professional imagers you can buy.



**Six innovations
that make your job**

EASIER.

1 IR-OPTIFLEX™ FOCUS SYSTEM

Discover issues significantly faster with Fluke's revolutionary, ultra-rugged focus system. The IR-OptiFlex focus system gives you optimum focus by combining focus-free ease-of-use with the flexibility of manual focus on the same camera!

2 IR-FUSION® TECHNOLOGY

Enjoy the industry's only point-and-shoot IR-Fusion camera. Fluke patented technology blends digital and infrared images into a single image to precisely document problem areas.

3 RUGGED ONE-HAND OPERATION

Experience the most rugged and reliable, lightweight professional camera around. One-touch focus, laser pointer, and torch. Point-and-shoot simplicity. No one builds more rugged, ergonomic tools than Fluke.

4 MULTI-MODE VIDEO RECORDING

Troubleshoot with the industry's only thermal imager that records focus-free video in visible light and infrared with full IR-Fusion capabilities. Monitor processes over time, easily create infrared video reports, and troubleshoot frame-by-frame. Easily download to PCs for video viewing and analysis.

5 IR-PHOTO NOTES™ ANNOTATION SYSTEM

Get an exact reference to your problem area by capturing up to three digital photos per file. Add images of equipment, motor nameplates, workroom doors or any other useful or critical information.

6 ELECTRONIC COMPASS

Make sure you and others know the location of the problem. Compass readings easily appear in images and reports.



Thermal imagers

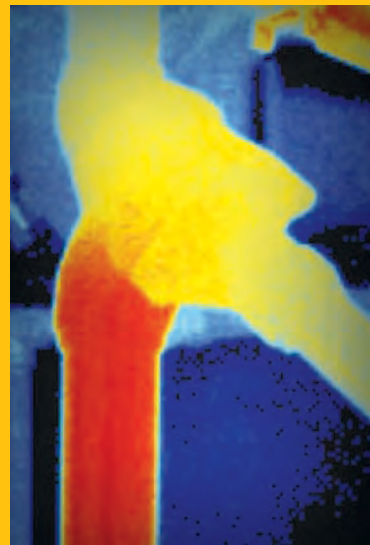
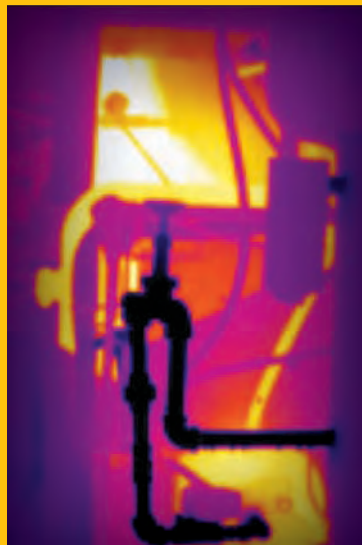
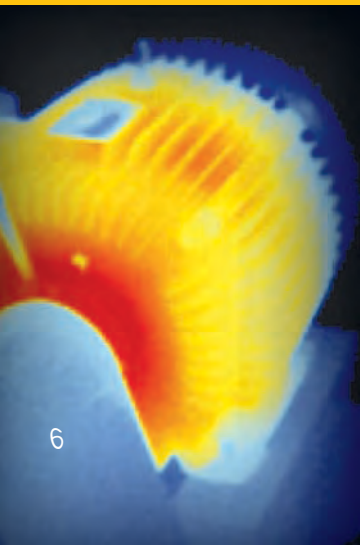
Built for the job



INDUSTRIAL AND COMMERCIAL
MAINTENANCE MADE EASY.

A Fluke thermal imager can save time and money by finding potential problems before they become costly disasters. With Fluke's new imagers you can efficiently inspect an entire facility for hidden issues or monitor a thermal process frame-by-frame.

Fluke's new imagers immediately make you more productive, so you spend less time finding problems and more time solving them. Our revolutionary IR-OptiFlex™ focus system helps you perform industrial, electrical and mechanical inspections significantly faster than ever before. Following Fluke's over 60-year heritage of making the world's finest test tools, our new industrial imagers are the lightest, most rugged, easiest-to-use professional imagers on the market.

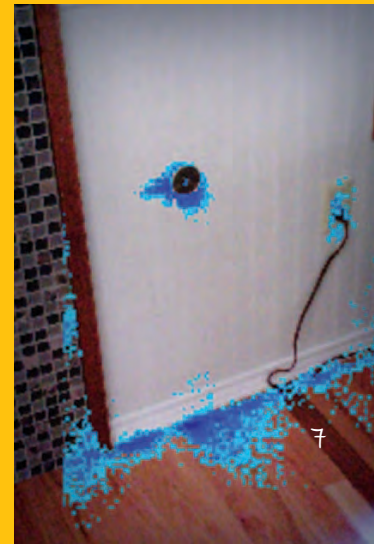
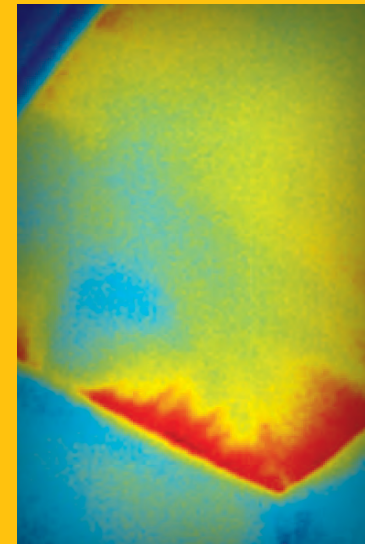
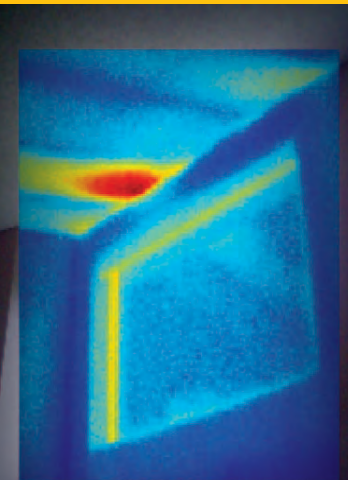


you do.

BUILDING DIAGNOSTICS MADE EASY.

Whether you're searching for unexpected air leaks, hidden moisture, construction defects, or other building issues, a Fluke thermal imager delivers a huge competitive advantage—it allows you to work faster and more efficiently.

Fluke's new imagers take your business to the next level by allowing you to perform building inspections significantly faster than ever before. With exclusive features such as our IR-OptiFlex™ focus system, IR-Fusion® technology, electronic compass, SmartView® analysis and reporting software, Fluke sets the new standard for building diagnostic thermal imagers.



Focusing MADE EASY.

INTRODUCING THE FLUKE IR-OPTIFLEX™ FOCUS SYSTEM

Focusing is the most important thing you do with your thermal imager. Our revolutionary IR-OptiFlex focus system keeps your camera in good focus from 1.2 m (4 ft) and beyond, whether you're taking pictures or video. Need close-up images? Switch to manual focus with a touch of a finger for tighter views. No more wasted time refining the focus, or making sense of an out-of-focus image. With our exclusive IR-OptiFlex focus system, Fluke takes frustration out of the picture.

To get your hands on the IR-OptiFlex focus system, get your hands on a Fluke thermal imager.



FIND PROBLEMS FASTER

Inspect significantly faster than with manual-only models.



ONE-TOUCH OPERATION

The IR-OptiFlex™ focus system allows you to easily switch between focus-free and manual focus with one finger.

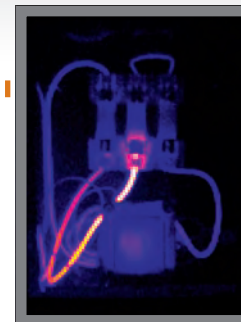


ULTRA-RELIABLE

Our rugged focus system ensures superior reliability, even in the harshest working conditions.



THE FLUKE IR-OPTIFLEX™ FOCUS SYSTEM DIFFERENCE



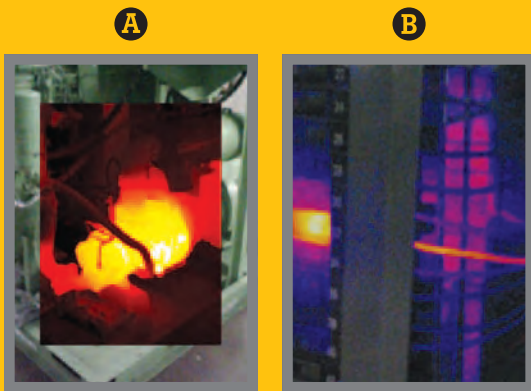
From 1.2 m (4 ft) and beyond, you're in clear focus.



Plus, you have the option to manually focus for closer views.

Imaging MADE EASY.

Your job is complicated enough. The last thing you need is to waste time with a hard-to-use tool. Fluke makes finding and diagnosing problems faster and easier with precision image-capture features.



IR-FUSION® TECHNOLOGY

The industry's first point-and-shoot IR-Fusion technology camera gives you aligned digital and infrared images every time.

- A: Excellent alignment in Picture-in-Picture mode.
- B: Exclusive AutoBlend™ mode aligns digital and infrared images into a single view.

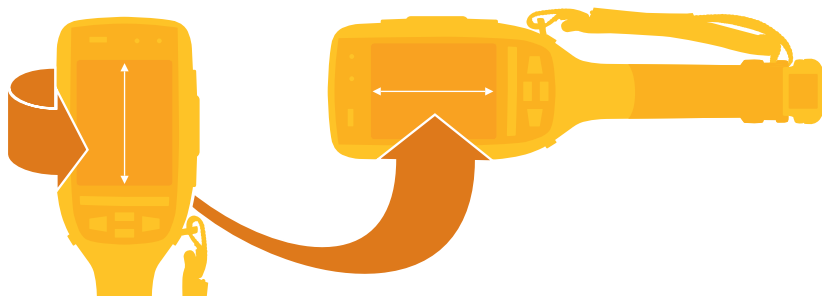
AUTOBLEND™ MODE

Only Fluke has mastered the ability to blend partially-transparent infrared and digital images to help you identify and report problem areas.



PORTRAIT OR LANDSCAPE FORMATS—YOUR CHOICE

Because Fluke cameras are lighter than competitive models and ergonomically balanced, they're easy to rotate from portrait to landscape. And our software allows you to rotate images in either orientation, too.

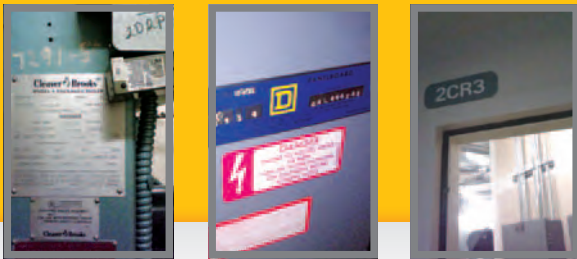


Reporting MADE EASY.

Documenting potential problems can be just as important and time-consuming as finding problems. Only Fluke includes SmartView® analysis and reporting software with its cameras. Use voice annotations, electronic compass readings, and IR-PhotoNotes™ annotation system and the reports practically write themselves.

IR-PhotoNotes™ ANNOTATION SYSTEM

Add up to three digital photos per infrared image to precisely document and clarify potential problems.



SMARTVIEW® SOFTWARE

Lifetime upgrades and license-free professional reporting software allow you to manage images, create custom reports, and export images in multiple formats, including JPG and BMP.



ELECTRONIC COMPASS

Eight point cardinal compass readings can easily be inserted into images and reports.

Troubleshooting MADE EASY.

Fluke makes it easier than ever to find the problem. Our Ti125 and TiR125 models help you pinpoint elusive issues with frame-by-frame infrared video analysis and streaming video output.



MULTI-MODE VIDEO RECORDING

With Fluke's exclusive multi-mode focus-free video recording you no longer have to deal with constant refocusing or confusing depth-of-field issues—a great feature for documentation, analysis, training or marketing purposes. Now you can record video in visible light and infrared with full IR-Fusion.

STREAMING VIDEO OUTPUT

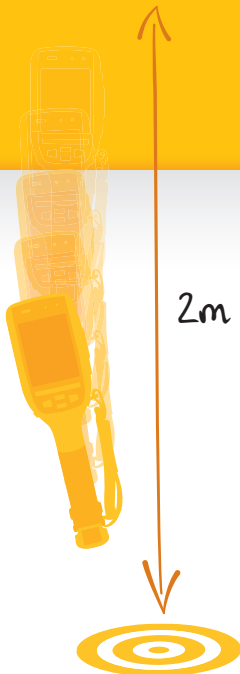
Stream live, focus-free video to a PC using SmartView® software (or to a display via PC).



Rugged MADE EASY.

When you see yellow, you see tough. Fluke's reputation for rugged tools across the board is legendary. No tools are more at home in harsh, demanding environments. And these new Fluke thermal imagers are no exception. Incredibly sophisticated on the inside, tough as nails on the outside. Add features such as a recessed protected lens, integrated lens cover, and adjustable hand strap, and you've got a thermal imager ready for anything your job can dish out.

DESIGNED TO
WITHSTAND A
TWO-METER DROP



2m (6.5 FT.)

DURABLE
DISPLAY

ADJUSTABLE HAND STRAP

INTEGRATED
LENS COVER

RECESSED LENS
WITH
LENS GUARD

IP 54 RATING

PATENTED RUGGED,
SHOCK ABSORBING
BATTERY PACK

See which Fluke Thermal Imager is right for you.

For industrial and commercial maintenance use



Ti125

Superior performance in a light, slim, rugged package.

- Widest temperature range for industrial/commercial applications
- Fluke exclusive IR-OptiFlex™ focus system
- Fluke exclusive IR-Fusion® with AutoBlend™
- Streaming video output
- Multi-mode focus-free and radiometric video
- Electronic compass



Ti110

Spend less time finding problems and more time fixing them.

- Rugged, lightweight, point-and-shoot
- Fluke exclusive IR-OptiFlex™ focus system
- IR-Fusion®
- Multi-mode, focus-free video
- Electronic compass

Infrared resolution	160 x 120	160 x 120
Focus mechanism	IR-OptiFlex™ focus system	IR-OptiFlex™ focus system
Thermal sensitivity (NETD)	≤ 0.10 °C at 30 °C target temp (100 mK)	≤ 0.10 °C at 30 °C target temp (100 mK)
Temperature measurement range	-20 °C to +350 °C (-4 °F to +662 °F)	-20 °C to +250 °C (-4 °F to +482 °F)
Temperature measurement accuracy	± 2 °C or 2 % (at 25 °C nominal, whichever is greater)	± 2 °C or 2 % (at 25 °C nominal, whichever is greater)
IR-Fusion® technology	Full infrared, PIP, Full visible, AutoBlend™, Color alarms	Full infrared, PIP, Full visible, Color alarm
IR-Photonotes® annotation system	Yes	Yes
Electronic compass	Yes	Yes
Multi-mode video recording	.AVI w/ MPEG encoding and .IS3 radiometric	.AVI w/ MPEG encoding
Voice annotation	Yes (60 seconds)	Yes (60 seconds)
Laser pointer/torch	Laser pointer and torch	Laser pointer and torch
Streaming video output	USB video output	—
Rechargeable batteries (4+ hours each)	2 rugged lithium-ion smart batteries	1 rugged lithium-ion smart battery
Ruggedness and reliability	2-meter drop test, IP54 and integrated lens cap	2-meter drop test, IP54 and integrated lens cap
Weight	0.726 kg (1.63 lbs)	0.726 kg (1.63 lbs)
Warranty	2 years, with additional available	2 years, with additional available

For building diagnostics use

For general use



TiR125

A professional building diagnostic thermal imager.

- Increased thermal sensitivity
- Fluke exclusive IR-OptiFlex™ focus system
- Fluke exclusive IR-Fusion® with AutoBlend™
- Multi-mode focus-free and radiometric video
- Electronic compass



TiR110

Spend less time in the field and more time growing your business.

- Rugged, lightweight, point-and-shoot
- Fluke exclusive IR-OptiFlex™ focus system
- IR-Fusion®
- Multi-mode, focus-free video
- Electronic compass



Ti100

Perfect general use camera designed for value conscious professional.

- Rugged, lightweight, point-and-shoot
- Focus-free infrared

160 x 120

160 x 120

160 x 120

IR-OptiFlex™ focus system

IR-OptiFlex™ focus system

Focus-free: 1.2 m (4 ft) and beyond

≤ 0.08 °C at 30 °C target temp (80 mK)

≤ 0.08 °C at 30 °C target temp (80 mK)

≤ 0.10 °C at 30 °C target temp (100 mK)

-20 °C to +150 °C (-4 °F to +302 °F)

-20 °C to +150 °C (-4 °F to +302 °F)

-20 °C to +250 °C (-4 °F to +482 °F)

± 2 °C or 2 % (at 25 °C nominal, whichever is greater)

± 2 °C or 2 % (at 25 °C nominal, whichever is greater)

± 2 °C or 2 % (at 25 °C nominal, whichever is greater)

Full infrared, PIP, Full visible, AutoBlend™, Color alarms

Full infrared, PIP, Full visible, Color alarm

Full infrared only

Yes

Yes

—

Yes

Yes

—

.AVI w/ MPEG encoding and .IS3 radiometric

.AVI w/ MPEG encoding

—

Yes (60 seconds)

Yes (60 seconds)

—

Laser pointer and torch

Laser pointer and torch

Laser pointer

USB video output

—

—

2 rugged lithium-ion smart batteries

1 rugged lithium-ion smart battery

1 rugged lithium-ion smart battery

2-meter drop test, IP54 and integrated lens cap

2-meter drop test, IP54 and integrated lens cap

2-meter drop test, IP54 and integrated lens cap

0.726 kg (1.63 lbs)

0.726 kg (1.63 lbs)

0.726 kg (1.63 lbs)

2 years, with additional available

2 years, with additional available

2 years, with additional available