

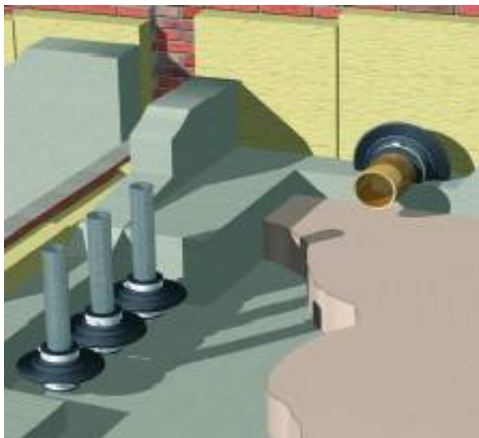
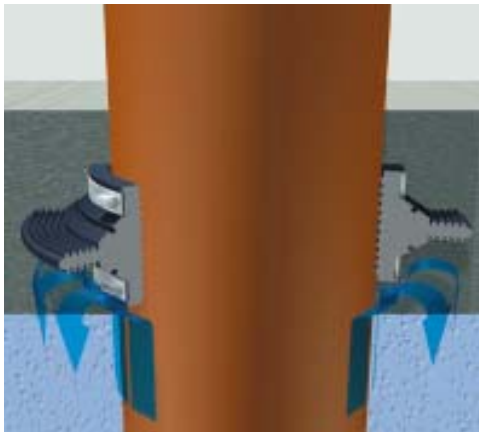
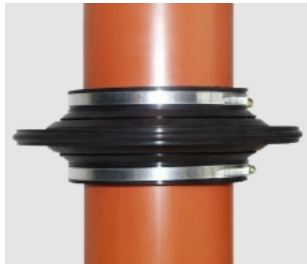


Modeloverzicht 2008 Schmidt Muurkragen

KG muurkragen Type 7/5 van EPDM Shore A/ hardheid 42±3

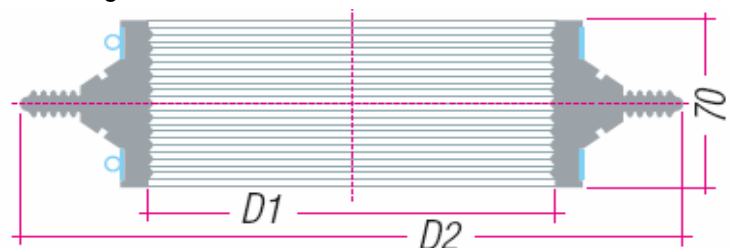
Alle KG muurkragen type 7/5 zijn voorzien van Norma-slangklemmen, Type Torro®S, materiaal aluzink

Vanaf DN 450 roestvast chroomstaal, materiaal 1.4016=W3



| Artikelnummer | Afmetingen | | | |
|---------------|------------|--------|------|------|
| | DN | Buis Ø | D1 Ø | D2 Ø |
| 400100250 | 25 | 32 | 29 | 127 |
| 400100320 | 32 | 40 | 38 | 136 |
| 400100400 | 40 | 50 | 48 | 146 |
| 400100500 | 50 | 63 | 60 | 158 |
| 400100650 | 65 | 75 | 71 | 169 |
| 400100800 | 80 | 90 | 84 | 182 |
| 400101000 | 100 | 110 | 105 | 203 |
| 400101250 | 125 | 125 | 120 | 218 |
| 400101251 | 125 | 140 | 120 | 218 |
| 400101500 | 150 | 160 | 154 | 252 |
| 400101750 | 175 | 180 | 175 | 273 |
| 400101751 | 175 | 200 | 195 | 239 |
| 400102000 | 200 | 225 | 215 | 315 |
| 400102250 | 225 | 250 | 245 | 343 |
| 400102500 | 250 | 280 | 275 | 373 |
| 400103000 | 300 | 315 | 310 | 408 |
| 400103500 | 350 | 355 | 352 | 435 |
| 400104000 | 400 | 400 | 395 | 480 |
| 400104001 | 400* | 400 | | |
| 400104500 | 450 | 450 | | |
| 400105000 | 500 | 500 | | |
| 400105500 | 550 | 560 | | |
| 400106000 | 600 | 630 | | |
| 400107000 | 700 | 710 | | |
| 400108000 | 800 | 800 | | |
| 400109000 | 900 | 900 | | |
| 400110000 | 1000 | 1000 | | |
| 400112000 | 1200 | 1200 | | |
| 400114000 | 1400 | 1400 | | |
| 400116000 | 1600 | 1600 | | |
| 400118000 | 1800 | 1800 | | |
| 400120000 | 2000 | 2000 | | |

Alle afmetingen in mm



* Muurkraag met verlengde spanbanden voor gietijzer of Eternit

Prijzen: Excl. BTW